

# Red Rock Plaza

1385 Washington St. (Route 1) No. Attleboro, MA 02760

# FOR LEASE



## 20,008 SF 1st Floor (Subdividable)

Highly visible retail box located on heavily traveled Rt. 1 ADT 22,000  
Rt. 295 ADT 53,000

National co-tenants include Michael's, Savers, PetSmart

Center shares signalized access with Walmart Supercenter, Lowe's, Target, Best Buy, Dick's

Facade and pylon top panel available

New facade under construction

Zoning: C60 (Commercial District)

## UNDER CONSTRUCTION

No warranty or representation, expressed or implied, is made as to the accuracy of the information contained herein, and same is submitted subject to errors, omissions, change in price, rental or other conditions, or withdrawal without notice.

**CONTACT:** Don Mace  
Vice President of Retail Brokerage  
DMace@KeyPointPartners.com  
781.418.6243

Rob Grady  
Vice President of Retail Brokerage  
RGrady@KeyPointPartners.com  
781.418.6267

**KEYPOINT**  
PARTNERS  
KeyPointPartners.com



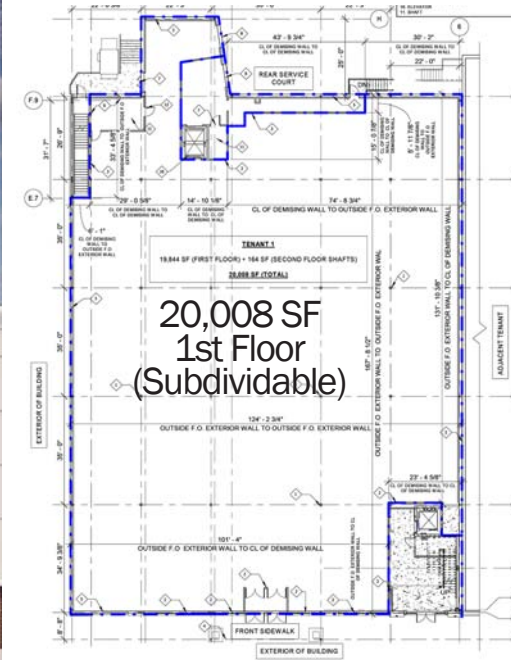
# Red Rock Plaza

1385 Washington St. (Route 1) No. Attleboro, MA 02760

# FOR LEASE



Dedicated 2nd floor entrance



Floor plans available on request

## OVERVIEW

First floor anchor space in prominent shopping center centrally positioned along the busy Route 1 retail corridor in North Attleboro, a regional trade area with 4.6 million square feet of retail space. Key nearby tenants include Marshalls, Ulta Beauty, Dick's Sporting Goods, DSW, BJ's Wholesale Club, Market Basket, Home Depot, Raymour & Flanagan, Burlington, and many more.

2024 DEMOGRAPHICS	3 Mile	5 Mile	7 Mile	ADDITIONAL INFO.	
POPULATION	48,998	185,153	294,080	TOTAL GLA	121,077 SF
NUMBER OF HH	19,510	74,476	119,277	PARKING	539 SPACES
AVERAGE HH INCOME	\$131,079	\$107,106	\$114,717	TRAFFIC COUNT	22,000 ADT (Rt 1) 53,000 ADT (Rt. 295)

No warranty or representation, expressed or implied, is made as to the accuracy of the information contained herein, and same is submitted subject to errors, omissions, change in price, rental or other conditions, or withdrawal without notice.

**CONTACT:** Don Mace  
Vice President of Retail Brokerage  
DMace@KeyPointPartners.com  
781.418.6243

Rob Grady  
Vice President of Retail Brokerage  
RGrady@KeyPointPartners.com  
781.418.6267





# Red Rock Plaza

# FOR LEASE

1385 Washington St. (Rt. 1) No. Attleboro, MA 02760



**CONTACT:** Don Mace  
Vice President of Retail Brokerage  
DMace@KeyPointPartners.com  
781.418.6243

Rob Grady  
Vice President of Retail Brokerage  
RGrady@KeyPointPartners.com  
781.418.6267

**KEYPOINT**  
PARTNERS  
KeyPointPartners.com





# Red Rock Plaza

# FOR LEASE

1385 Washington St. (Rt. 1) No. Attleboro, MA 02760

Emerald Square Mall  
JC Penney macys

53,000 ADT  
Exit 1

North Attleboro

1

RAYMOUR & FLANIGAN Furniture  
DOLLAR TREE  
PATEL BROTHERS "Celebrating Our Food... Our Culture"

1/2 Mile

Red Rock Plaza  
20,008 SF 1st Floor (Subdividable)  
Michaels Where Creativity Happens  
PETS M A R T  
S O V E R S

target

LAUNCH

22,000 ADT

Chris Gasbarro's Fine Wine & Spirits  
verizon wireless

OLD NAVY  
Marshalls  
five BELOW  
LONGHORN  
SKECHERS  
Panera BREAD  
LENSCRAFTERS  
ULTA BEAUTY  
carter's  
GameStop  
ME Massage Envy

BEST BUY

planet fitness  
Guitar Center  
PLAY IT AGAIN SPORTS  
FedEx Office

BLINDS To Go  
T-Mobile  
Vitamin Shoppe

JOANN  
DICK'S SPORTING GOODS  
DSW  
LOWE'S Improving Home Improvement  
RAYMOUR & FLANIGAN Furniture

Walmart SUPERCENTER

Ninety Nine

Attleboro

No warranty or representation, expressed or implied, is made as to the accuracy of the information contained herein, and same is submitted subject to errors, omissions, change in price, rental or other conditions, or withdrawal without notice.

**CONTACT:** Don Mace  
Vice President of Retail Brokerage  
DMace@KeyPointPartners.com  
781.418.6243

Rob Grady  
Vice President of Retail Brokerage  
RGrady@KeyPointPartners.com  
781.418.6267





UNDER CONSTRUCTION

## 22,826 SF 2nd Floor

Highly visible retail space located on heavily traveled Rt. 1 ADT 22,000  
Rt. 295 ADT 53,000

National co-tenants include Michael's, Savers, PetSmart

Center shares signalized access with Walmart Supercenter, Lowe's, Target, Best Buy, Dick's

Facade and pylon panel available

New facade under construction

Zoning: C60 (Commercial District)

No warranty or representation, expressed or implied, is made as to the accuracy of the information contained herein, and same is submitted subject to errors, omissions, change in price, rental or other conditions, or withdrawal without notice.

**CONTACT:** Don Mace  
Vice President of Retail Brokerage  
DMace@KeyPointPartners.com  
781.418.6243

Rob Grady  
Vice President of Retail Brokerage  
RGrady@KeyPointPartners.com  
781.418.6267

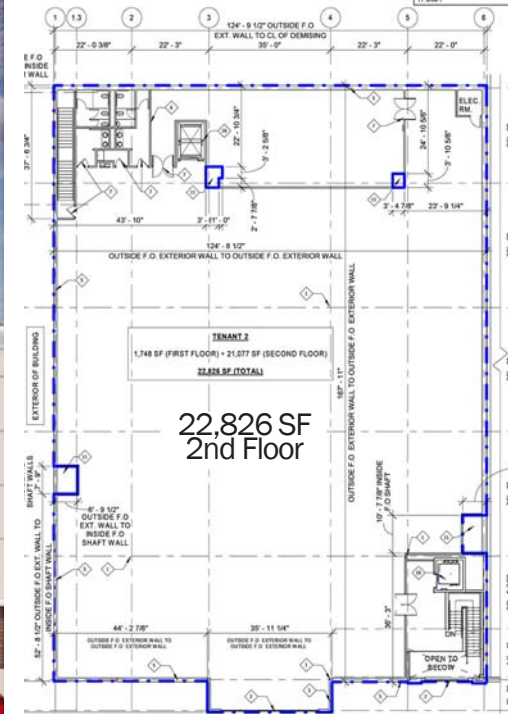
# Red Rock Plaza

1385 Washington St. (Route 1) No. Attleboro, MA 02760

# SHOWROOM FOR LEASE



Dedicated 2nd floor entrance



Floor plans available on request

## OVERVIEW

Second floor showroom in prominent shopping center centrally positioned along the busy Route 1 retail corridor in North Attleboro, a regional trade area with 4.6 million square feet of retail space. Key nearby tenants include Marshalls, Ulta Beauty, Dick's Sporting Goods, DSW, BJ's Wholesale Club, Market Basket, Home Depot, Raymour & Flanagan, Burlington, and many more.

2024 DEMOGRAPHICS	3 Mile	5 Mile	7 Mile	ADDITIONAL INFO.	
POPULATION	48,998	185,153	294,080	TOTAL GLA	121,077 SF
NUMBER OF HH	19,510	74,476	119,277	PARKING	539 SPACES
AVERAGE HH INCOME	\$131,079	\$107,106	\$114,717	TRAFFIC COUNT	22,000 ADT (Rt 1) 53,000 ADT (Rt. 295)

No warranty or representation, expressed or implied, is made as to the accuracy of the information contained herein, and same is submitted subject to errors, omissions, change in price, rental or other conditions, or withdrawal without notice.

**CONTACT:** Don Mace  
Vice President of Retail Brokerage  
DMace@KeyPointPartners.com  
781.418.6243

Rob Grady  
Vice President of Retail Brokerage  
RGrady@KeyPointPartners.com  
781.418.6267





# Red Rock Plaza

1385 Washington St. (Rt. 1) No. Attleboro, MA 02760

# SHOWROOM FOR LEASE



**CONTACT:** Don Mace  
Vice President of Retail Brokerage  
DMace@KeyPointPartners.com  
781.418.6243

Rob Grady  
Vice President of Retail Brokerage  
RGrady@KeyPointPartners.com  
781.418.6267



# Red Rock Plaza

1385 Washington St. (Rt. 1) No. Attleboro, MA 02760

# SHOWROOM FOR LEASE

**Emerald Square Mall**  
JCPenney macys

**Red Rock Plaza**  
22,826 SF 2nd Floor  
Target  
Michaels  
PETS MART  
SAVERS

**Best Buy**

**Walmart SUPERCENTER**

**99c Only**

**Interstate 295** 53,000 ADT  
Exit 1

**North Attleboro**

**Attleboro**

**1** 22,000 ADT

**1/2 Mile**

**Businesses:** RAYMOUR & FLANIGAN Furniture, DOLLAR TREE, PATEL BROTHERS, Chris Gasbarro's Fine Wine & Spirits, verizon wireless, OLD NAVY, Marshalls, five BELOW, SKECHERS, LONGHORN RESTAURANT, Panera BREAD, LENS CRAFTERS, OSHKOSH B'gosh, ULTA BEAUTY, carter's, GameStop, ME Massage Envy, JOANN, DICK'S SPORTING GOODS, DSW, LOWE'S Improving Home Improvement, RAYMOUR & FLANIGAN Furniture, Vitamin Shoppe, T-Mobile, BLINDS To GO, BOSTON'S FINEST FLOUR BAKERY, planet fitness, Guitar Center, PLAY IT AGAIN SPORTS, FedEx Office.

No warranty or representation, expressed or implied, is made as to the accuracy of the information contained herein, and same is submitted subject to errors, omissions, change in price, rental or other conditions, or withdrawal without notice.

**CONTACT:** Don Mace  
Vice President of Retail Brokerage  
DMace@KeyPointPartners.com  
781.418.6243

Rob Grady  
Vice President of Retail Brokerage  
RGrady@KeyPointPartners.com  
781.418.6267



# Red Rock Plaza

1385 Washington St. (Rt. 1) No. Attleboro, MA 02760

# FOR LEASE

6,175 SF Pad



## PROPERTY HIGHLIGHTS

Prominent shopping center anchored by Michaels, PetSmart, and Savers, well-positioned on the "50-yard line" of the busy Route 1 retail corridor, which encompasses 4.6 million square feet of retail space

The center is flanked by Best Buy and Target, and shares access to Walmart Supercenter, Lowe's Home Improvement, and Dick's Sporting Goods - other nearby tenants include Marshalls, Ulta Beauty, DSW, BJ's, Market Basket, Home Depot, and many more

The highly visible outparcel is situated at a signalized entrance and faces Route 1

Fully built-out restaurant - space plans available upon request

No warranty or representation, expressed or implied, is made as to the accuracy of the information contained herein, and same is submitted subject to errors, omissions, change in price, rental or other conditions, or withdrawal without notice.

**CONTACT:** Don Mace  
Vice President of Retail Brokerage  
DMace@KeyPointPartners.com  
781.418.6243

Rob Grady  
Vice President of Retail Brokerage  
RGrady@KeyPointPartners.com  
781.418.6267

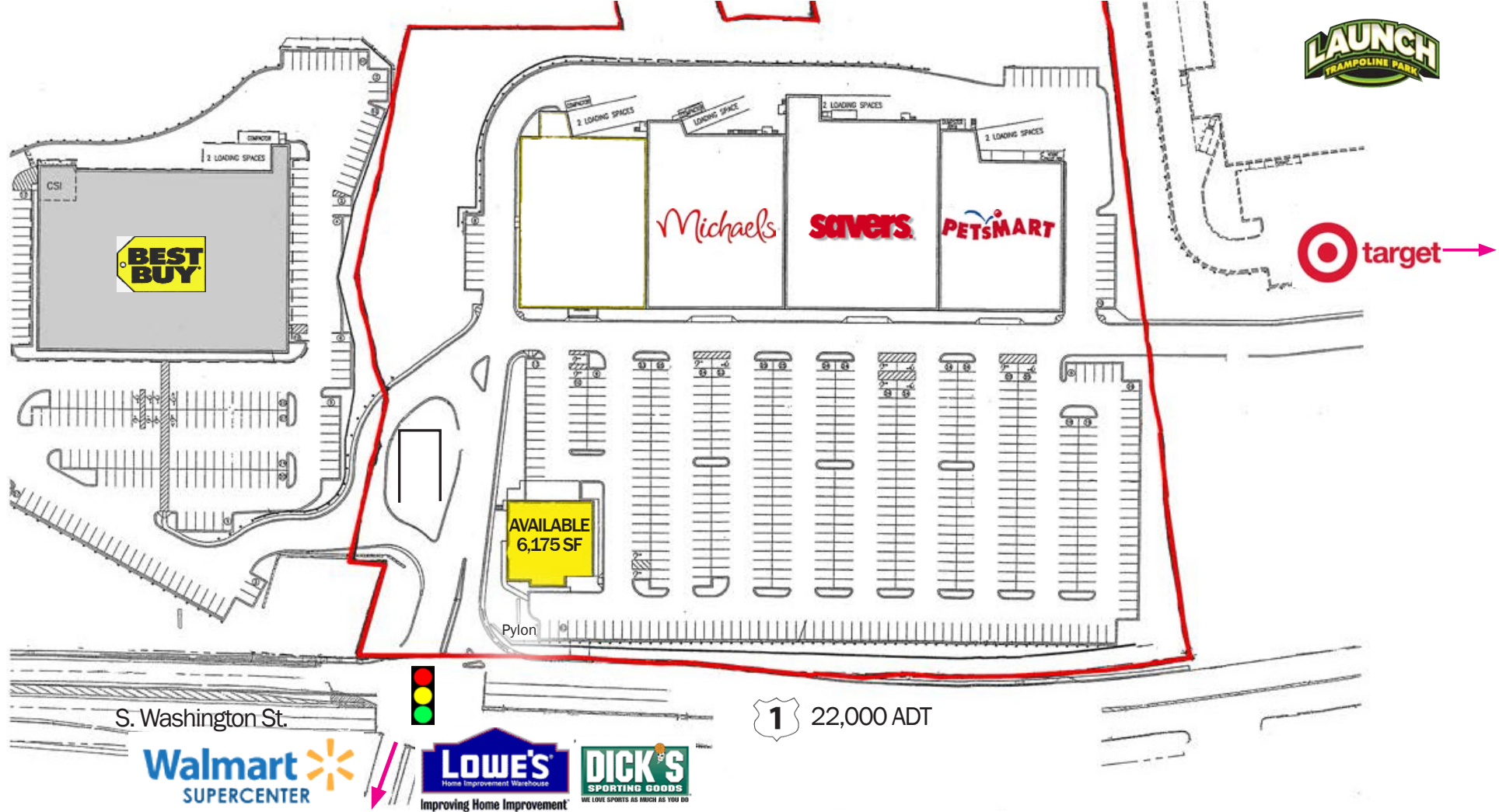


# Red Rock Plaza

1385 Washington St. (Rt. 1) No. Attleboro, MA 02760

# FOR LEASE

6,175 SF Pad



2024 DEMOGRAPHICS	3 Mile	5 Mile	7 Mile	ADDITIONAL INFO.	
POPULATION	48,998	185,153	294,080	TOTAL GLA	121,045 SF
NUMBER OF HH	19,510	74,476	119,277	PARKING	539 SPACES
AVERAGE HH INCOME	\$131,079	\$107,106	\$114,717	TRAFFIC COUNT	25,681 ADT (Rte 1)

No warranty or representation, expressed or implied, is made as to the accuracy of the information contained herein, and same is submitted subject to errors, omissions, change in price, rental or other conditions, or withdrawal without notice.

**CONTACT:** Don Mace  
 Vice President of Retail Brokerage  
 DMace@KeyPointPartners.com  
 781.418.6243

Rob Grady  
 Vice President of Retail Brokerage  
 RGrady@KeyPointPartners.com  
 781.418.6267

